

**DPU**  
Dr. D. Y. Patil Vidyapeeth, Pune  
(Deemed to be University)

**Global Business School  
& Research Centre** PUNE | INDIA



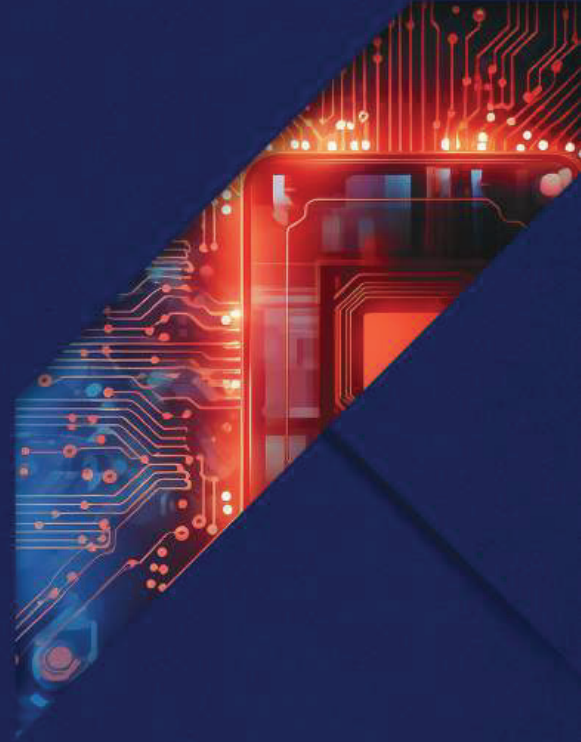
NAAC Accredited with a CGPA Of 3.64 on a four point scale at "A++"Grade



# ADMISSIONS OPEN

FOR THE BATCH OF

**2026-2028**



## AI-Embedded MBA Program

Power Your Future

Approved by AICTE



## ABOUT DR.D. Y. PATIL VIDYAPEETH

Dr. D. Y. Patil Vidyapeeth was awarded and granted the status of Deemed to be University in 2003 by Government of India, Ministry of Human Resources Development on the recommendations of University Grants Commission. Dr. D. Y. Patil Vidyapeeth, Pune has been Re-accredited (3rd Cycle) by NAAC with a CGPA of 3.64 on a four-point scale at 'A++' grade. The University Grants Commission (UGC) has granted Category-I University status to DPU under the National Institutional Ranking Framework (NIRF) 2023, conducted by the Ministry of Education, Government of India.



## ABOUT "GBSRC"

Global Business School and Research Centre (GBSRC), a constituent institute of Dr. D. Y. Patil Vidyapeeth (Deemed to be-university), Pune. GBSRC is known for its focus on real-world skills and excellence in management education. The MBA at GBSRC is approved by AICTE which attracts students from all over the country. Our approach to management education integrates teaching-learning process, continuous research and development of syllabus and the institutional development, community development, and knowledge sharing programmes



Declared as category 1 university under graded autonomy regulations 2018



Rank in University category across India-2025



An ISO 9001:2015 14001:2015 certified University



Awarded amongst the top prominent B-School of India for year 2025



OUTLOOK-ICARE RANKINGS India's Best B-Schools 2025 Top Private B-Schools-Pune

**MEMBER OF**

Association of Indian Universities

AWARDS

RANKS & RE

It gives me immense pleasure to address prospective students, parents, and stakeholders as you consider joining the vibrant academic community at Global Business School and Research Centre (GBSRC), Dr. D. Y. Patil Vidyapeeth, Pune.

At our Vidyapeeth, we believe that true leadership in management education is built upon a foundation of academic integrity, social responsibility, and technological foresight. The evolving landscape of business shaped by rapid advancements in artificial intelligence, digitalization, and global integration demands a new generation of leaders who are adaptive, ethical, and future-ready. GBSRC's MBA program reflects this vision by empowering students not just with advanced knowledge, but with the mindset and skills necessary to thrive in a fast-changing world.

Our commitment to holistic development goes beyond classroom learning; we focus on nurturing individuals who are curious, compassionate, and committed to creating a positive impact. Learning at GBSRC is anchored in a culture of inquiry, hands-on experience, and interdisciplinary collaboration, complemented by strong industry partnerships and international engagement. We take pride in fostering an environment where innovation is celebrated, and the entrepreneurial spirit is encouraged.

The strength of our institution lies in its people our distinguished faculty, enterprising students, and dedicated staff, all working in unison to realize our shared mission of excellence in education, research, and societal contribution. Our faculty members are not only renowned academicians but also mentors who inspire students to challenge conventions, think critically, and act ethically.

As we embrace new milestones such as NBA accreditation for our MBA program and global collaborations with industry and academia we reaffirm our commitment to delivering transformative education that meets global standards and local aspirations. At GBSRC, students are equipped to become architects of change leaders who understand the nuances of technology, appreciate the value of diversity, and are prepared to contribute meaningfully to business and society.

I invite you to explore the transformative opportunities that await at GBSRC and embark on a journey where academic excellence meets purposeful leadership and shape a brighter, more inclusive future.



Dr. Smita Jadhav  
Pro Vice Chancellor  
Dr. D.Y.Patil Vidyapeeth, Pune,  
Deemed to be University

## MESSAGE FROM DIRECTOR'S DESK

I am delighted to welcome you all to the Global Business School and Research Centre (GBSRC), a constituent of Dr. D. Y. Patil Vidyapeeth, Pune. At GBSRC, we have always strived to respond to the dynamic and ever-evolving world of business through academic excellence, research, and innovation. With the launch of our AI-Embedded MBA Program, we are taking a bold and future-focused step toward preparing professionals who are not **just industry-ready but industry-defining.**



**Dr. Manish Sinha**  
Director  
GBSRC, Pune

Our vision is to be a globally recognized management institution that nurtures responsible and future-ready business leaders, empowered by technology and grounded in ethical values. Today, the **business world is being rapidly transformed by artificial intelligence, analytics, and digital disruption. Recognizing this shift, GBSRC has integrated artificial intelligence, data science, and emerging technologies** into the core of its MBA curriculum to meet the demands of the Fourth Industrial Revolution.

We continue to enhance academic excellence in consulting, training, research, and teaching through a holistic and interdisciplinary approach. Our AI-Embedded MBA goes beyond theoretical knowledge—it blends AI literacy, digital tools, and managerial acumen to ensure students are equipped to solve real-world problems and lead in an AI-powered future.

Our MBA program attracts aspirants from across the country due to our reputation for developing agile professionals with the right mix of knowledge, skills, and attitude that align with the evolving needs of the corporate world. Our faculty—a blend of renowned academicians, researchers, and industry experts—ensures a dynamic and enriching learning experience, now further enhanced with AI-driven pedagogies, digital simulations, and project-based learning.

We continue to use globally accepted, case-based teaching methods to encourage participative learning, strategic thinking, and innovation. The program now incorporates AI tools in decision-making, predictive modeling, and digital strategy, ensuring that our students are equipped to drive growth and transformation in any business environment.

We are proud to share that our MBA program has been accredited by the National Board of Accreditation (NBA) for the period 2024–2027, affirming our commitment to high-quality management education.

We have also strengthened our industry and academic collaborations with esteemed partners such as Bloomberg Lab, Tata Technologies, Bosch, Bombay Stock Exchange, and global universities like Ball State University, INTI International University (Malaysia), Semey Medical University (Kazakhstan), Skyline University (UAE) and more.

The AI-Embedded MBA at GBSRC is designed to shape the next generation of leaders, entrepreneurs, and **policy-makers who understand how to harness technology for strategic advantage and societal benefit.**

Our students develop a holistic and global perspective, one that is deeply informed by both human values and machine intelligence.

**I am confident that this program will not only shape the careers of our students but also contribute meaningfully to the transformation of the corporate world and the larger society.**

Welcome to a new era of management education. Welcome to GBSRC

### VISION

To be a globally recognized management institution that continually responds to changing business paradigms through research and academic excellence to nurture responsible business leaders.

### MISSION

- ✓ To become a globally recognized management institution through knowledge creation, dissemination and application
- ✓ To enhance academic excellence in consulting, training, research and teaching through a holistic approach
- ✓ To develop leaders, Entrepreneurs and policy makers through transformative education.

# MBA

## AI-Embedded MBA at GBSRC



### MBA Programme Overview

MBA at GBSRC is a 2 years Full-time programme approved by AICTE, New Delhi, Government of India, The programme is spread across 4 semesters, Two semesters will be common for all students and third semester onwards the specializations will be introduced specifically for creating focussed professionals in their respective domain. The curriculum is revised and upgraded every year by the advisory board comprising expert academicians and industry experts to ensure the industry standards are catered with the best suitable professionals.

### PROGRAMME EDUCATIONAL OBJECTIVES (PEOS) OF GBSRC

To equip students with the knowledge & sensitivity for diversity, interdisciplinary & interpersonal approach.

To develop & enhance analytical & critical thinking ability.

To imbibe global & regional awareness with effective use of CT to thrive in competitive business environment.

### AI-Embedded Business Curriculum

Understand how AI transforms strategy, finance, marketing, HR, operations, and entrepreneurship. Choose dual specializations amongst Marketing, Finance, Business Analytics, Human Resource Management, Operations Management, Agribusiness Management and Healthcare and Hospital Management.

#### Hands-On Tech Training

Build strong practical skills with Python programming, Power BI, Tableau, SQL, Data Visualization, and Predictive Analytics.

#### Advanced AI Focus

- › Machine Learning for Business Insights and Decision-Making
- › Natural Language Processing (NLP) for Customer Intelligence and Market Research
- › Deep Learning Applications in Business

#### Real-World Projects

Tackle live projects and AI case studies from leading companies to sharpen your industry-readiness.

#### Key Elements

- › AI & Business Strategy
- › Machine Learning Applications in Business
- › Natural Language Processing (NLP) for Business Intelligence
- › Python for Business Analytics
- › Data Visualization using Power BI and Tableau
- › Predictive Analytics and Forecasting
- › Digital Transformation and Innovation Strategy
- › Financial Technologies (FinTech) powered with state of the art BLOOMBERG Lab
- › AI-Driven Marketing & Customer Engagement
- › Operations Optimization through AI

#### Program Highlights

AI-Embedded Business Curriculum: Understand how AI transforms strategy, finance, marketing, operations, and entrepreneurship. Choose dual specializations amongst Marketing, Finance, Business Analytics, Human Resource Management, Operations Management, Agribusiness Management and Healthcare and Hospital Management.

#### Dual Competency

Graduate with leadership strength and tech mastery – the perfect profile global employers are looking for.

#### Harvard Business Cases

Align business knowledge with real-world business experiences with Harvard Business cases and simulations.



# MASTER OF BUSINESS ADMINISTRATION

## SPECIALIZATIONS OFFERED



### MARKETING MANAGEMENT

Marketing management is an ideal choice for individuals looking to explore dynamic career opportunities beyond traditional roles. This specialization equips students with essential skills that connect people, brands, business functions, and organizations. Every company relies on marketing professionals to achieve its goals and maximize profitability.

By diving into marketing, you gain exposure to diverse industries while developing a strong understanding of consumer-driven business strategies. This knowledge empowers you to craft tailored products and services that add value to consumers.

Pursuing this specialization will help you build the expertise needed to excel in business management and drive impactful growth.



### FINANCE MANAGEMENT

In today's fast-paced economy, financial knowledge is essential for success. Understanding key concepts such as money management, assets, liabilities, investments, taxation, and budgeting is crucial for making informed decisions. Finance plays a vital role at individual, corporate, and governmental levels, shaping economic stability and growth.

This specialization provides

students with a comprehensive understanding of business and prepares them for diverse careers, from investment banking, corporate finance, to financial advisory. Organizations highly value finance professionals for their problem-solving abilities and strategic decision-making skills.



### HUMAN RESOURCE MANAGEMENT

Human Resource Management (HRM) is the art of effectively managing people within an organization to align employee performance with strategic business goals. A well-structured HR team not only enhances workforce efficiency but also provides companies with a competitive edge.

HR professionals are strong

leaders who contribute to an organization's credibility and long-term success. This specialization helps students understand key stakeholders, gain insights into organizational structures, and explore geographical market dynamics.

By mastering hiring strategies, payroll management, training methodologies, performance analysis, and workforce planning, students develop a strategic mindset essential for navigating the complexities of human resource management.



## WHY MBA IN AGRIBUSINESS MANAGEMENT AT GBSRC?

Pursuing an MBA in Agribusiness Management opens doors to a world of opportunities in the thriving agri-business sector. This program blends cutting-edge knowledge with practical insights, preparing you to tackle challenges in agriculture, food industries, and rural markets.

With dual specialization in marketing, you'll master the art of driving innovation, sustainability, and growth in both traditional and modern business landscapes. Shape your future as a leader who creates impact where it matters most

### KEY ELEMENTS

- › Dual specialization in Agri-Business and Marketing.
- › Expert faculty, including an Agriculture Gold Medalist.
- › Industry-aligned, future-focused curriculum.
- › **Hands-on learning through field visits and live projects.**
- › **Internships with top agri-business firms.**
- › Focus on sustainability and innovation.



## LEARNING OUTCOMES

- › Agri-Business Ecosystem Understanding
- › Agri-Entrepreneurship Development
- › Finance & Risk Management
- › Supply Chain Optimization
- › Policy & Trade Analysis
- › Sustainable Business Strategies
- › Agri-Tech Integration
- › Leadership & Decision-Making

## CAREER OPPORTUNITIES IN MBA AGRI BUSINESS MANAGEMENT

- › Agritech and Startups
- › Sustainable Agribusiness Consultant
- › Supply Chain and Logistics Manager
- › Marketing and Brand Manager
- › Rural Banking and Agri-Financing Expert
- › Export and Import Specialist
- › Food Processing and Value Addition Specialist
- › Policy Analyst
- › Entrepreneur
- › Data Analyst in Agri-Business

## WHY MBA IN HOSPITAL AND HEALTHCARE MANAGEMENT?

The healthcare sector in India is experiencing a surge in demand for professional administrators to manage healthcare institutions nationwide. In today's complex healthcare environment, proficient leaders with both managerial expertise and a nuanced understanding of healthcare systems are crucial.

An MBA in Hospital and Healthcare Management equips professionals with the necessary skills to navigate the unique challenges of this industry, including regulatory compliance, financial complexities, and continuous technological advancements. This specialized program not only hones leadership and decision-making capabilities but also fosters an understanding of the ethical considerations inherent in healthcare delivery. By integrating business principles with healthcare-specific knowledge, an MBA in Hospital and Healthcare Management prepares individuals to contribute meaningfully to improving healthcare systems, enhance patient outcomes, and drive organizational success in an increasingly competitive and dynamic field.

### CAREER INFORMATION

- › Hospital Administrator/Manager
- › Healthcare Consultant
- › Healthcare Quality/Operations Manager
- › Healthcare Data Analyst
- › Healthcare Entrepreneur
- › Insurance Underwriter
- › Health Informatics
- › Medical Device Sales and Marketing
- › Public Health Administration: Work in public health agencies to plan and implement programs that promote community health.



## LEARNING OBJECTIVES

- › Develop a Holistic Understanding of the Healthcare Sector
- › Master the Integration of Healthcare Technology
- › Cultivate Leadership and Management Acumen
- › Navigate Healthcare Policies and Regulations
- › Embrace Collaborative Partnerships
- › Champion Ethical Decision-Making
- › Lead Organizational Change and Transformation

## LEARNING OUTCOMES

- › Strategic Leadership
- › Operational Excellence
- › Innovative Problem-Solving
- › Global Healthcare Perspective
- › Effective Communication
- › Ethical Decision-Making
- › Networking and Collaboration

Business Analytics for MBA students is a vital specialization that integrates data-driven decision-making with core **business management principles, empowering future leaders to solve complex business problems efficiently and strategically using analytical tools and techniques.** It bridges the gap between management and data science by teaching students to extract actionable insights from large datasets, apply predictive models, and optimize business processes.

### KEY ELEMENTS

MBA programs in Business Analytics typically cover both general management subjects and specialized analytics courses across four semesters. Here are key curriculum components:

- Core management subjects: Quantitative Methods, Managerial Economics, Marketing Management, Financial Accounting, Operations Management, and Human Resource Management.
- Analytical tools and techniques: Data Modelling, Business Intelligence, Predictive Analytics, Statistical Analysis, Big Data Analytics, Data Mining, Stochastic Modelling, and Optimization Analytics.
- **Technical skills: Proficiency with tools like Excel, R, Python, Tableau, and other analytics platforms to work with and interpret large datasets.**
- Visualization and reporting: Techniques to summarize and present data insights to stakeholders for strategic planning.

### IMPORTANCE AND BENEFITS

Business Analytics is crucial for MBA graduates because:

- It enhances decision-making by using data rather than intuition, **improving efficiency and outcomes** for organizations.
- It offers a competitive edge, enabling businesses to spot trends, risks, and opportunities early.
- It prepares students for high-demand careers in **data science, analytics consulting, operations, finance, marketing analytics, and more.**

Overall, an MBA in Business Analytics fosters robust analytical and managerial capabilities, producing professionals who are well-equipped for leadership roles in today's data-driven business environment.



Operations and supply chain management (OSCM) are two interconnected fields central to how businesses optimize efficiency, deliver products and services, and achieve strategic goals

### OPERATIONS MANAGEMENT OVERVIEW

Operations management focuses on managing internal processes—planning, organizing, and controlling resources needed for production or service delivery. Its **core objectives are maximizing efficiency, minimizing costs, and ensuring consistent quality.** Key functions include production planning, process design, inventory management, quality control, and resource allocation.

- Production planning and scheduling
- Process optimization and improvement
- Inventory and resource management
- Quality assurance and control
- Financial oversight and cost management

### CAREER OPPORTUNITIES

Professionals in OSCM work in roles such as operations manager, supply chain analyst, procurement specialist, logistics coordinator, and inventory manager. These roles are vital in sectors like manufacturing, retail, consulting, and technology.

Operations and supply chain management collectively help organizations streamline processes, control costs, and deliver value to customers in a rapidly changing global environment.



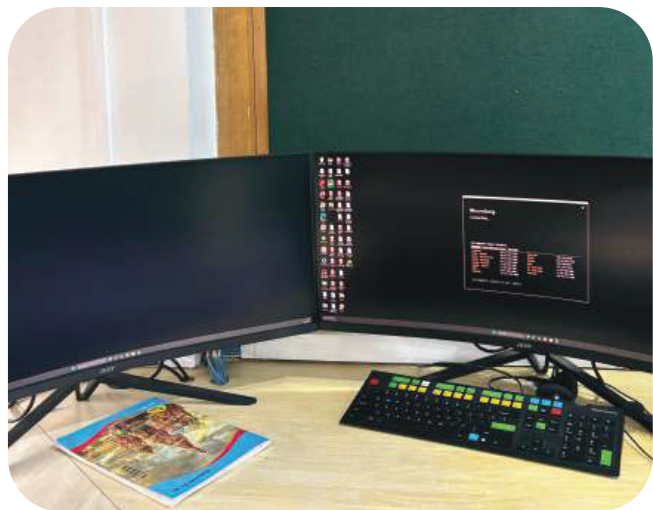
## Bloomberg Lab at GBSRC

GBSRC proudly introduces the Bloomberg Lab, a state-of-the-art facility providing **real-time financial data and analytics**. Designed to enhance the learning experience for management students, the lab offers **hands-on exposure to global financial markets, portfolio management, and investment strategies**. With access to industry-standard tools, students can bridge theoretical knowledge with practical skills, preparing them for **careers in finance, banking, and business management**.

### Fantastic opportunity for students:

- Building practical skills that boost your resume
- Working on real-world data and projects
- Networking with professionals
- Gaining a competitive edge for internships and jobs
- GBSRC... proudly presents... the Bloomberg Lab — a true game-changer in management education.
- Not just a facility... but a gateway to the world of global finance.
- Here... students don't just study numbers... They experience real-time financial data.
- They bridge the gap between classroom theories... and real-world challenges.
- This is where careers in finance, banking, and business management take flight.

The Bloomberg Lab at GBSRC...  
Not just learning.  
Not just training.  
But transforming students into tomorrow's financial leaders.



## Harvard Business School Case Study Method

Harvard case studies are a core teaching tool for MBA students, providing real-world scenarios designed to build business judgment, decision-making, and leadership skills through immersive discussion and problem-solving exercises. At Harvard Business School (HBS), the case method is the backbone of the curriculum and is considered central to management education.

### Benefits for MBA Students

- Real-World Business Problems  
Each case study presents actual companies facing tough decisions
- Debate and Discussion  
Learn to argue your point, debate with classmates, and back up ideas with solid data
- Critical Thinking Development  
Step into the shoes of business leaders and analyze challenges from every angle
- Real-World Preparation  
Prepares you to make smart decisions quickly — just like in the real business world

# PERSONALIZED TRAINING SESSIONS

## TRAINING AND PLACEMENT

### CAREER GUIDANCE AND PLACEMENT ASSISTANCE

At GBSRC, we are committed to shaping your career through comprehensive guidance and robust placement support. Our dedicated Career Development Cell bridges the gap between students and top organizations in agri-business, marketing, and allied industries.

With personalized mentoring, resume-building workshops, and interview training, students are **equipped with the confidence and skills needed to excel** in their professional journeys. Strong industry connections and collaborations ensure access to diverse job opportunities across leading companies. We take pride in our stellar placement record, **making sure every student finds the right path to a successful career** in the dynamic corporate world.

### SPECIAL EMPHASIS

- Leveraging technology-driven solutions like AI, blockchain, and precision agriculture to address modern agri-business challenges.
- Developing expertise in sustainable practices and green supply chain management to meet global market demands.
- Exploring emerging markets and opportunities in organic farming, agritech startups, and value-added products.
- Gaining insights into rural market dynamics and **innovative financing models for agri-business ventures.**
- Building skills for global agri-business management through exposure to international case studies and trends.

### SUMMER INTERNSHIP PROJECT

The Summer Internship Project (SIP) offers students a unique opportunity to gain real-world exposure, students tackle live projects addressing key challenges like supply chain management, sustainability, and market expansion.

This hands-on experience enhances their problem-solving, analytical, and leadership abilities while bridging the gap between academic concepts and practical applications. Guided by industry experts and faculty, students gain valuable insights into rural economies, innovative agri-business strategies, and emerging technologies. The SIP equips students with industry-relevant skills, setting the foundation for impactful careers in the evolving agri-business landscape.

#### Career Acceleration Program

- Prepare students for Industry Challenges
- Enhance Soft skills and Overall Personality
- Accelerate the career opportunities of Students

#### Grooming Sessions

- JD Based Training Sessions
- Handling Tricky Interviewers
- Art of Co-relating for effectiveness



#### Placement Readiness and Exposure Program

- Conducted before Placement Season
- Program includes Mock GD and PI

#### Corporate & Alumni Guest Sessions

- Corporate Guest sessions
- Alumni Interaction

### PLACEMENT

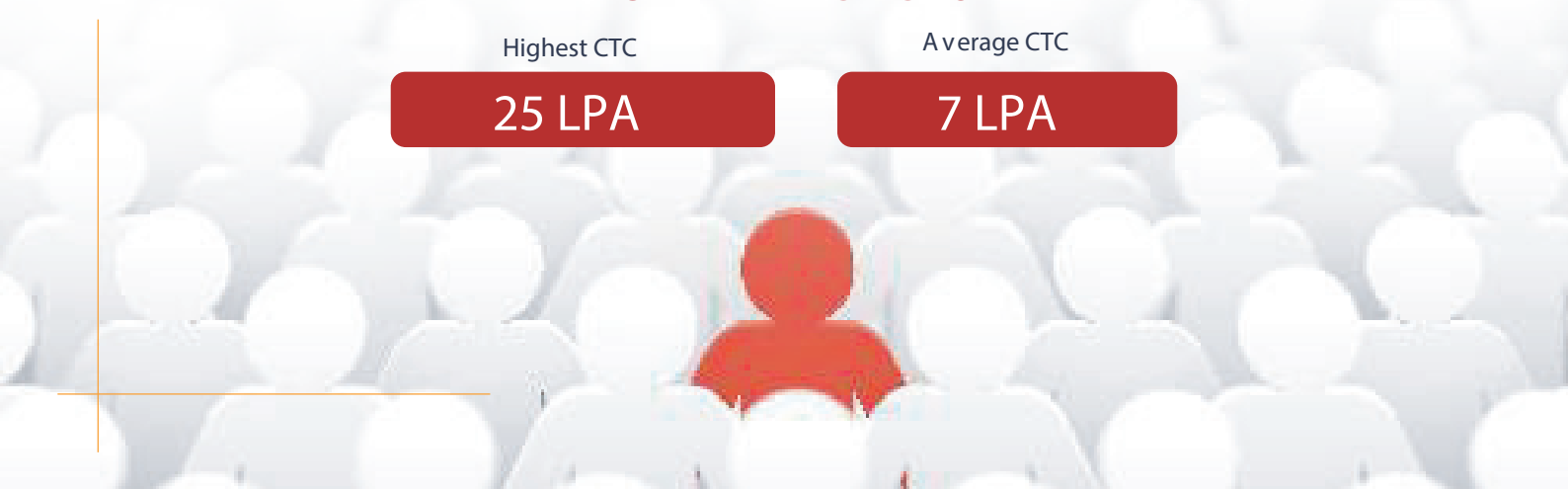
### HIGHLIGHTS

Highest CTC

Average CTC

25 LPA

7 LPA



## PLACEMENT GLIMPSE



Aarav  
TATA AIG



Manasi Ajay Bhandare  
DPU Hospital



Mukhtar Firoj Colandaj  
TATA AIG



Simran Jangid  
Omega Electronics



Abhishek Yadav  
Simplotel



Ajay Zaware  
Oxygreen Landscape



Akash Lande  
Amul



Amit Sharma  
Max Life Insurance



Ankush Ramchandra Kadam  
Indospace



Apekshita Sanjay Yeola  
BIOJOBZ



Ayushi Dwivedi  
BIOJOBZ



Durva Devendra Chavan  
Nelson IQ



Gaurav Gorade  
DPU Hospital



Hariom Patel  
Simplotel



Mansi Manish Dixit  
Jaro Education



Gauri Chandrakant Jadhav  
DPU Hospital



Bhakti Ajit Kumbhar  
Amul



Abhinav Bhagwan Pachore  
Ceasefire Industries Pvt.Ltd.



Pratha Tiwari  
Posh Metals



Purusharthvardhan Rathore  
Yotta



Ramavatar Rathi  
ICICI Securities



Rani Jaiswal  
Sowaka



Riya Patel  
ICICI Securities



Rohit Renukadas Auti  
IndiaMart



Shubham Prabhakar Anap  
ICICI Securities



Vaibhav Satish Umbare  
IndiaMart



Dr.Swapnali Prakashrao Hiwrale  
7 Orange Hospital



Vipraj Jha  
TATA AIG





Our Recruiters

IndusInd Bank

INDOSPACE

ninjacart

ICICI Securities

KPMG

YOTTA

Deloitte.

syngenta

asianpaints

TTCL

IIFL FINANCE

ADITYA BIRLA  
MEMORIAL HOSPITAL

treebo

ACUITY  
KNOWLEDGE PARTNERS

FERTINAGRO  
BIOTECH

SYMBIOSIS UNIVERSITY HOSPITAL  
AND RESEARCH CENTRE (SUHRC)

bigbasket

cognizant

NEEYAMO

ICICI Lombard  
Nibhaye Vaade

OxyGreen  
Landscape

eClerx

KPMG

Rusan  
A TECHNOLOGY DRIVEN ENTERPRISE

NIQ

Berger

PUMA

CreliaHealth

AXIS BANK

Zydex  
Innovating for Sustainability

tcs  
TATA CONSULTANCY SERVICES

MEDICOVER

Mahindra

jaro education

biojobz  
Innovated. Empowered.

MAYPHARM  
LIFE SCIENCES

accenture

SIMPLOTTEL

Red Bull

MEDICOVER  
HOSPITALS

godrej agrovvet  
a godrej company

ETG

RMPCL

HOSPITAL  
7Orange

Mapro

LAKME

Fasa

## PROGRAMME FEE FOR 2 YEAR

Rs. 10,50,000/-\*

\*Hostel Charges will be in addition to the tuition fee mentioned above.

## ELIGIBILITY FOR ADMISSIONS

Graduate (10+2+3 OR 10+2+4) in any discipline from any recognized university with not less than 50% (and reserved category not less than 45%) overall aggregate marks. Candidates appearing for the final year

examination may also apply. Candidates who have registered/appeared for any of the following national level entrance test with a valid score will also be considered.

- DPU-AIET-2026
- CAT 2025
- XAT 2026
- CMAT 2026
- MAT Sept 2025 to May 2026
- ATMA Dec 2025 to June 2026
- MH-CET 2026

## STEPS TO FOLLOW



Register Yourself



Verify OTP



Verify EMAIL



Fill your application form online



Pay application fee and submit

## APPLICATION PROCESS AND PAYMENT

- Application fee is Rs. 1,000. Applications can be filled online only
- The payment gateway accepts all payments through Credit/Debit cards, Google pay/UPI/BHIM/Amazon, and Demand Draft

## SELECTION PROCESS CENTRES\* SUBJECT TO CHANGE

Patna | Pune | Chennai | Delhi | Hyderabad | Jaipur | Indore | Lucknow | Mumbai | Nagpur | Ahmedabad | Bengaluru | Bhopal

## GLOBAL BUSINESS SCHOOL AND RESEARCH CENTER

"APPLY THROUGH DPU ALL INDIA ENTRANCE TEST (DPU-AIET)"

Global Business School & Research Centre.

Sr. No. 87, 88, Tathawade, Bangalore-Mumbai Expressway By-pass, Pune 411 033

9049002620 | 7972597418 | 7972597418 / 9049002020

**YOUR  
FUTURE OUR  
RESPONSIBILITY**

